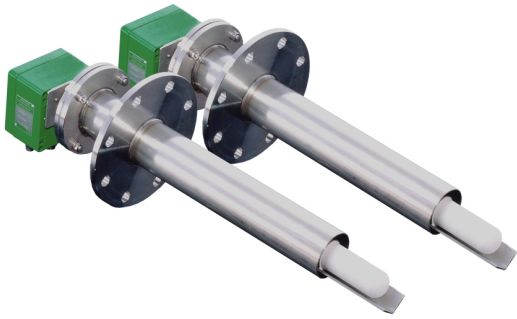


AQUATEC[®] 2000 - Cabinet & Electronic Unit

Dimensions:	2100 mm x 800 mm x 800mm
Mains voltage :	230 V / 50 to 60Hz Tolerance ±10% 115 V / 50 to 60Hz Tolerance ±10%
Power consumption :	4000 VA + 100W / m for heated extraction tube
Ambient operating temperature:	+5°C to +40°C (41°F to 104 °F)
Relay outputs, potential-free:	250V \approx 10A
Analogue output:	4 - 20mA O ₂ wet O ₂ dry H ₂ O load max. 500 Ohm, potential-free, active
Analogue input, measuring cell:	Re: > 9 MOhm Ue: -45mV - 265mV for active measuring range
Analogue input, thermocouple:	Re: > 900 kOhm
Temperature compensation :	electronic
Response time mA output:	change of 100mV at sensor input < 200ms
Display:	LC dot matrix 240 x 64 - LED backlit
Accuracy :	±0,2% of measured O ₂ value
IP code:	IP54
Dimensions:	on request



AQUATEC[®] 2000 - Probes

Process gas temperature:	up to 600 °C (1112 °F) up to 1400 °C (2552 °F) with cooling protection tube
Immersion depth:	up to 3682mm
Immersion depth with cooling protection tube:	up to 1000 mm
Measuring principle:	Zirconium oxide
Process gas pressure:	-50 mbar to +50 mbar (-0.725 to +0.725 psig) Others on request
Flow velocity:	0 to 50 m/s
Ambient temperature:	-40 °C to +80 °C (-40 °F to +176 °F)
Reaction time(O₂):	0.5s (process flow velocity > 10m/sec.)
T90-time(O₂):	5.0s (process flow velocity > 10m/sec.)
Probe material:	V4A (1.4571/316Ti)
IP code:	IP65
Power supply:	through electronic unit
Detection limit:	< 1ppm O ₂
Dimensions:	on request